

RKHD-75 Fixed Speed Electrical Schematics

460-3-60 UL

Operating Voltage 460 VAC
Auxillary Voltage 24 VAC
Frequency 60 Hz
Degree of Protection IP20

Document Number 141084.00

UL508A/CSA22.2

Page	Title
1	INDEX
2	INLET LINE
3	POWER CIRCUITS
4	AUXILIARY SUPPLIES
5	CONTROL BOARD LAYOUT
6	24V AUXILIARIES
7	24V AUXILIARIES
8	TERMINAL
9	LAYOUT

List of Symbols

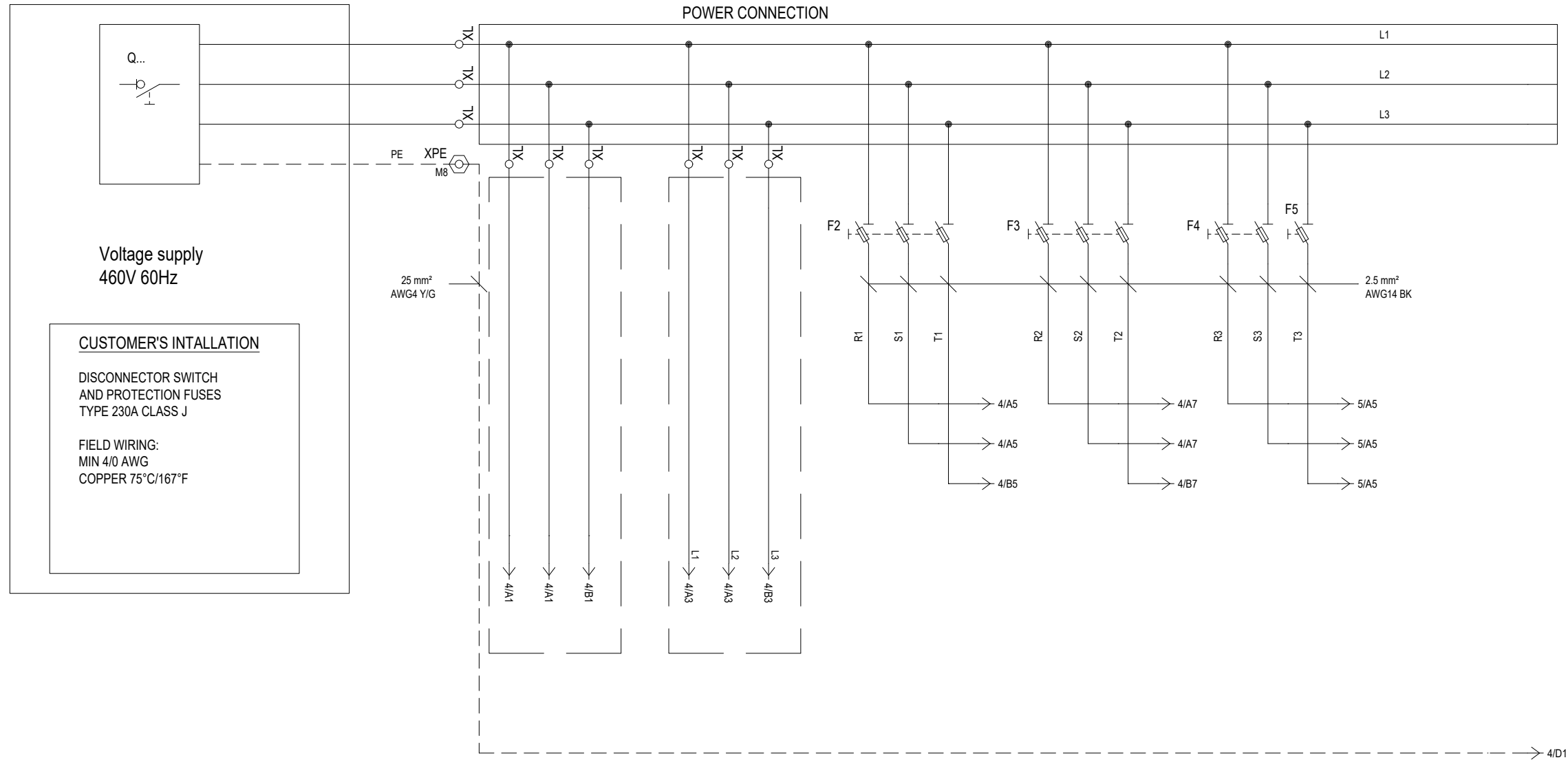
LABEL	DESCRIPTION	POSITION
A2	PANEL OPERATOR	10/A1
A2	PANEL OPERATOR	5/C1
EV4	LOAD/UNLOAD	7/D4
EV5	WATER DRAIN	7/D4
F2	FAN MOTOR M2 PROTECTION FUSES	3/B5
F3	FAN MOTOR M3 PROTECTION FUSES	3/B6
F4	POWER TRANSFORMER T1 PROTECTION FUSES	3/B7
F5	CONTROL PHASE PROTECTION FUSES	3/B7
F6	POWER SUPPLY CONVERTER FUSES	5/C5
F7	CONTROL PROTECTION FUSE	5/C5
F8	CONTROLBOARD PROTECTION FUSE	5/B6
F9	PROTECTION FUSE 24VDC	5/D3
FM1	OVERLOAD PROTECTION MOTOR M1	4/C2
FM1A	OVERLOAD PROTECTION INTERNAL MOTOR M1	4/E1
FM2	OVERLOAD PROTECTION FAN MOTOR M2	4/C5
FM3	OVERLOAD PROTECTION FAN MOTOR M3	4/C7
FS1	RELE PHASES SEQUENCY	5/A7
G1	SUPPLY CONVERTER AC/DC	5/B3
KD	DELTA CONTACTOR	7/D6
KL	LINE CONTACTOR	7/D7
KM2	MOTOR M2 CONTACTOR	7/D5
KM3	MOTOR M3 CONTACTOR	7/D5
KY	STAR CONTACTOR	7/D6
M1	COMPRESSOR	4/E2
M2	AIR FAN	4/E5
M3	OIL FAN	4/E7
Q...	EXTERNAL MAIN SWITCH	3/A1
S1	PRESSURE SENSOR	8/C5
S1	SAFETY BUTTON	5/D5
S2	TEMPERATURE SENSOR	8/C6
T1	TRANSFORMER	5/B5



support@pneutech.com
888.966.9007 • PneuTech.com

RKHD-75 Fixed Speed - Electrical Schematics

Inlet Line



034 - UL	[hp - kW]	[V]	[A]	SET MAX [A]
M1	85 - 63.3	460	127.0	FM1: 140
M2	0.47 - 0.35	460	0.5	FM2: 0.55
M3	0.96 - 0.72	460	1.40	FM3: 1.6

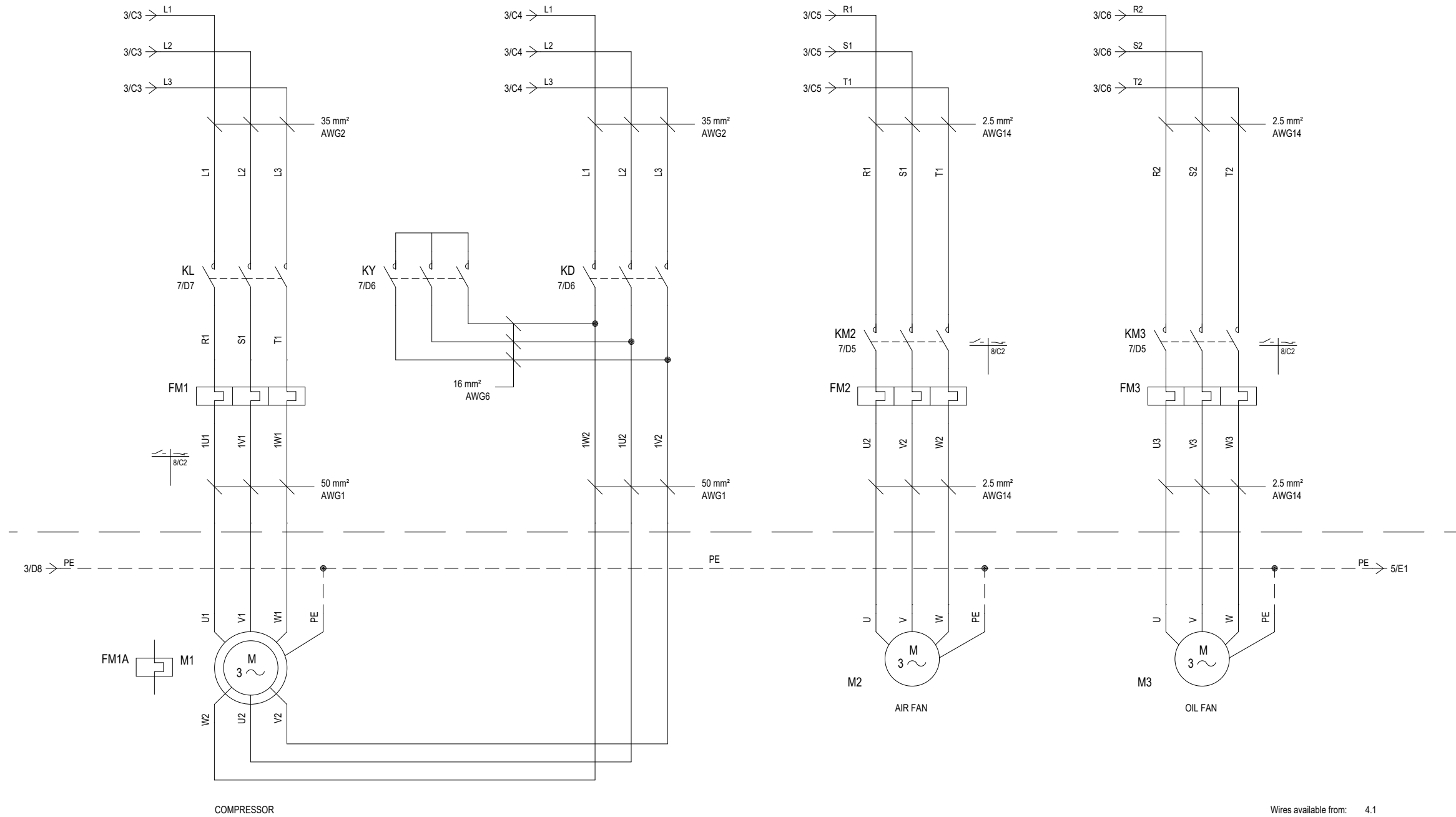
Wires available from: 3.1



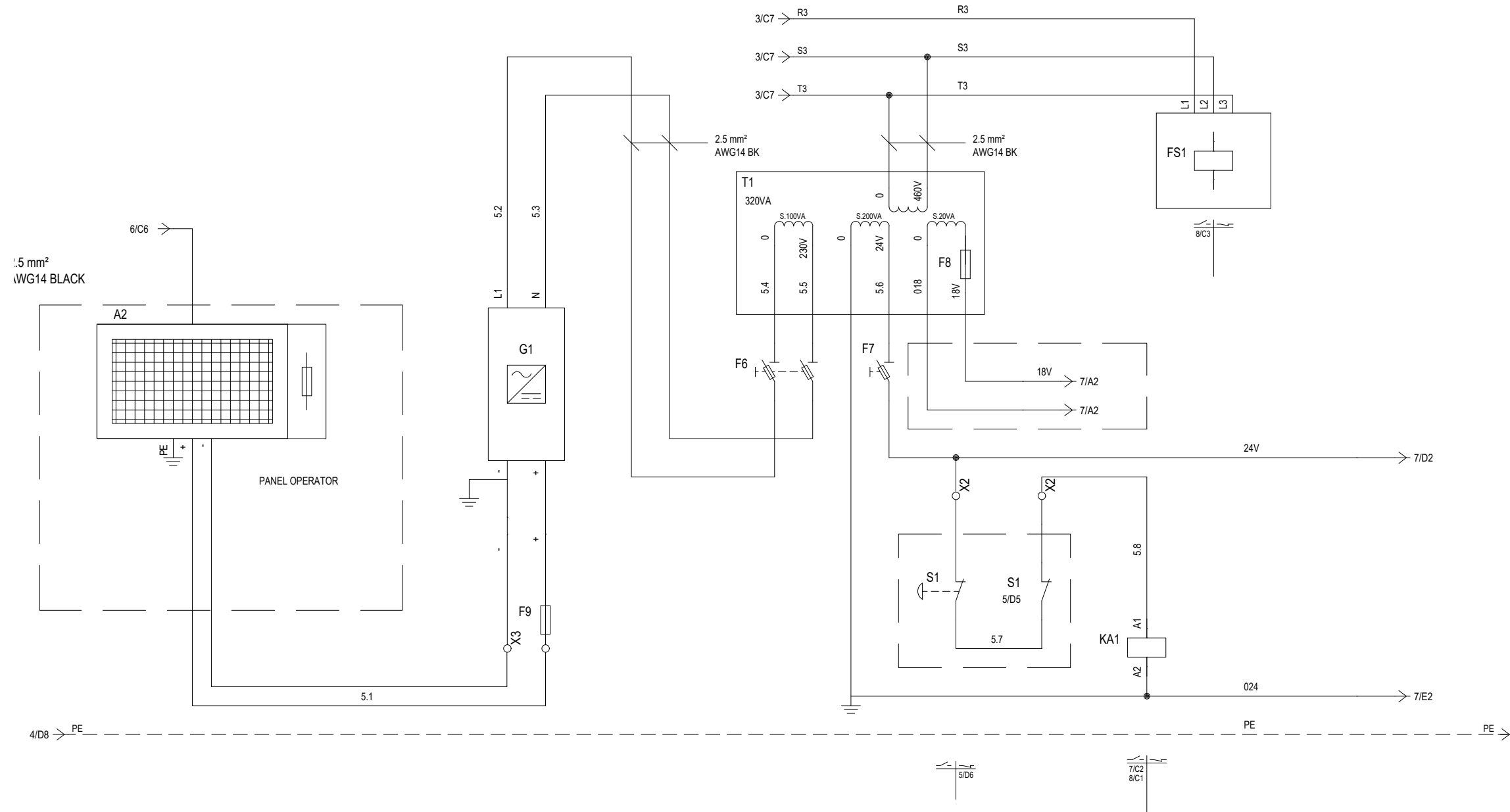
support@pneutech.com
888.966.9007 • Pneutech.com

RKHD-75 Fixed Speed - Electrical Schematics

Power Circuits



Auxillary Supplies



Initial wire: 5.1
 Final wire: 5.8
 Wires available from: 5.9

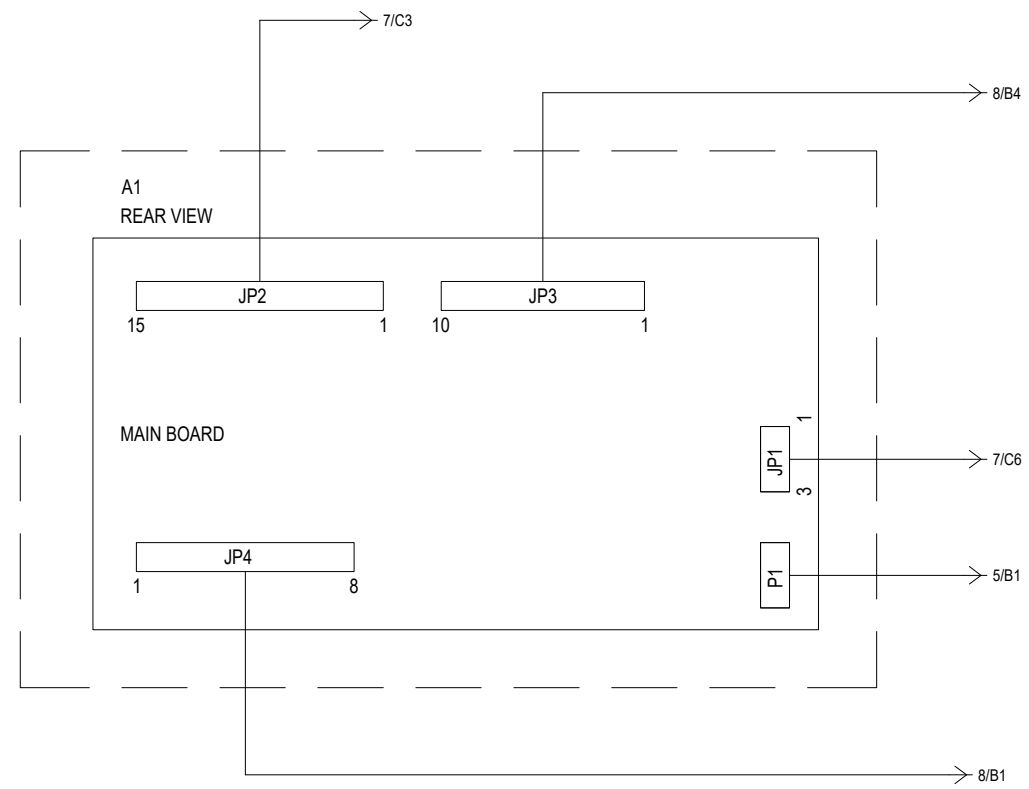


support@pneutech.com
 888.966.9007 • PneuTech.com

RKHD-75 Fixed Speed - Electrical Schematics

Control Board Layout

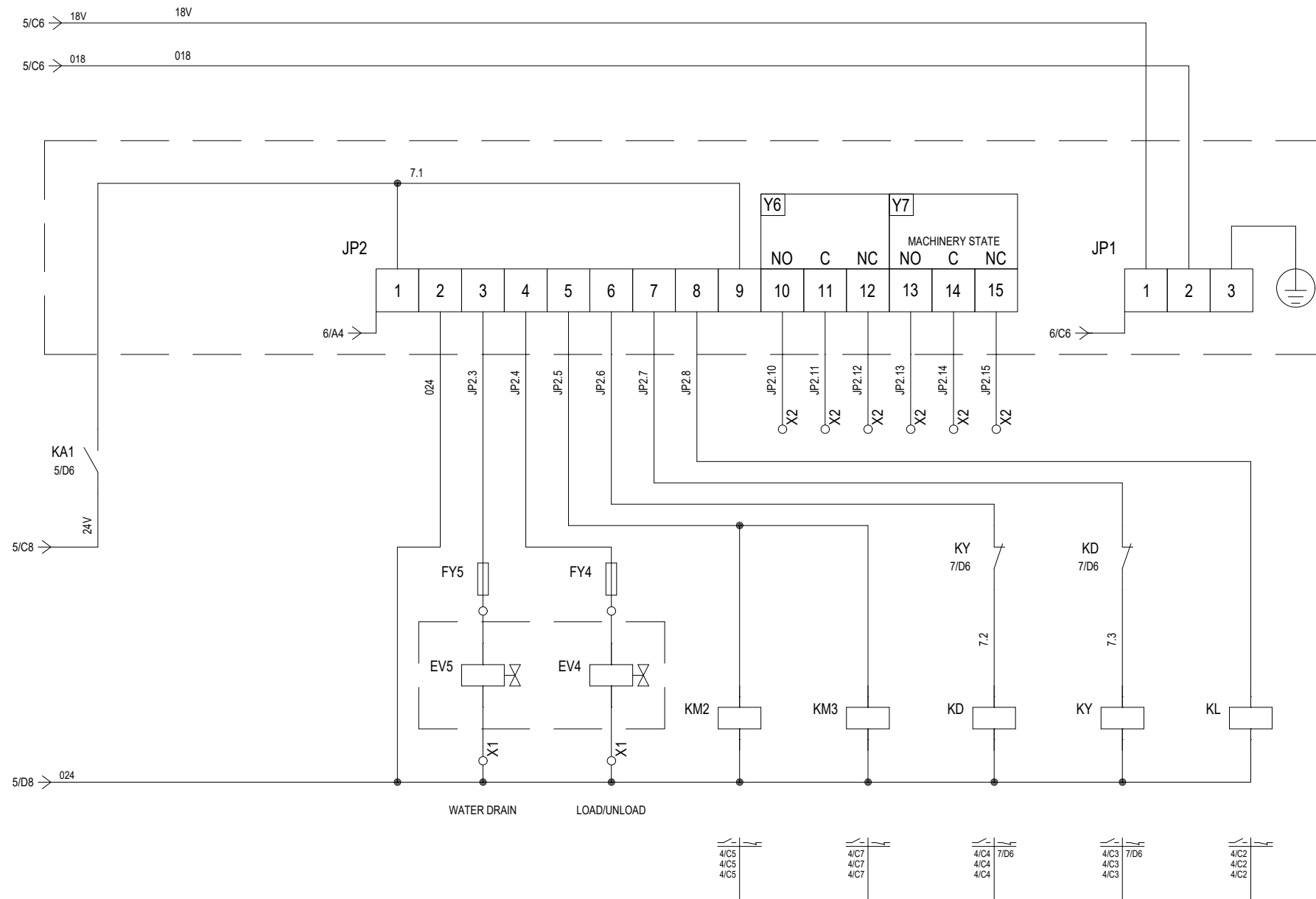
1 mm²
AWG18 RED



RKHD-75 Fixed Speed - Electrical Schematics

24V Auxilliaries

1 mm²
AWG18 RED



Initial wire: 7.1
Final wire: 7.3
Wires available from: 7.4

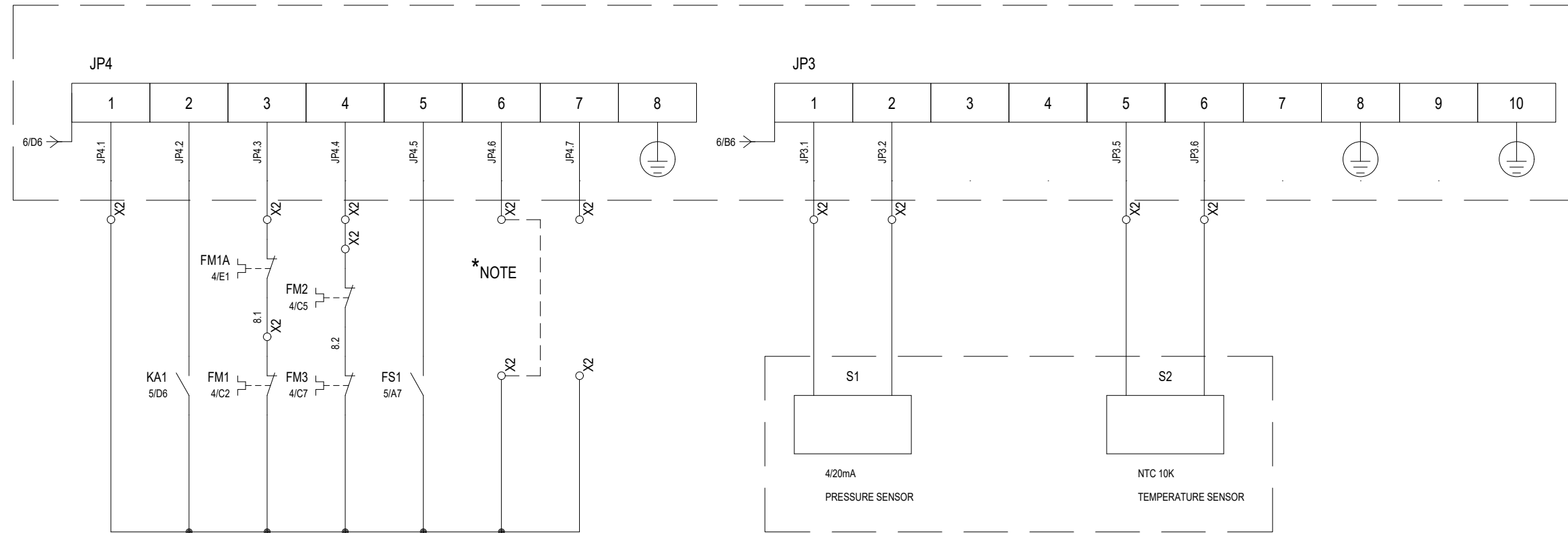


support@pneutech.com
888.966.9007 • Pneutech.com

RKHD-75 Fixed Speed - Electrical Schematics

24V Auxilliaries

1 mm²
AWG18 RED



*** NOTE:**
 EN: In case of external control of the pressure, remove the jumper and connect the contacts of the external pressure switch

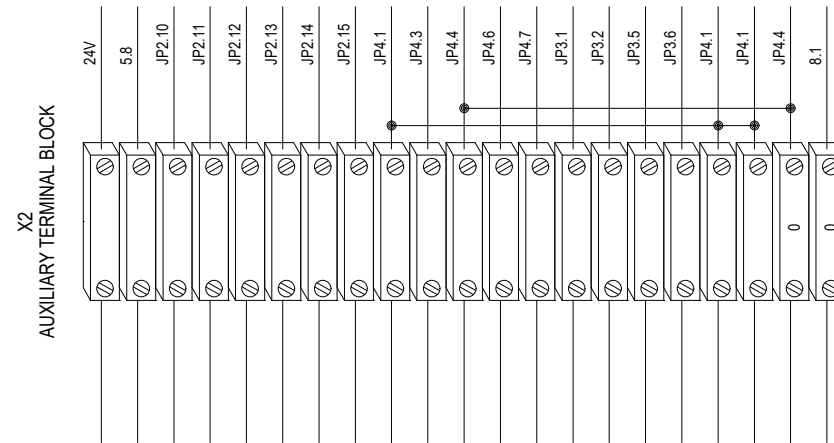
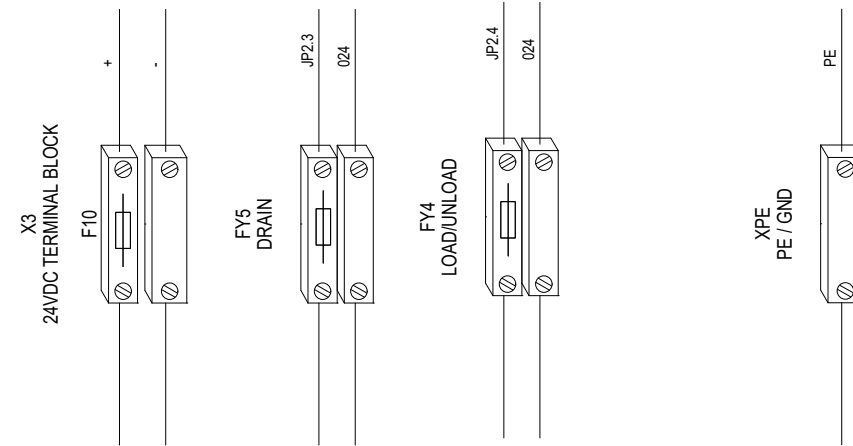
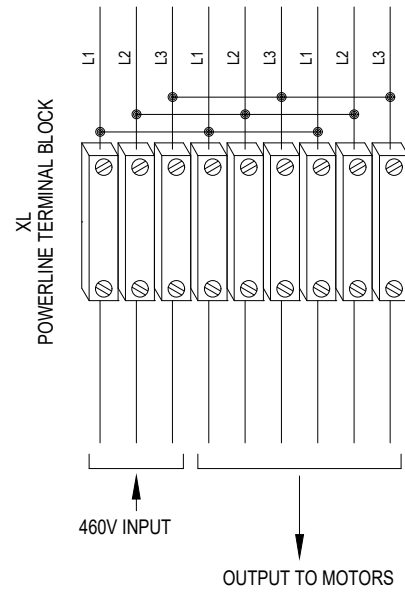
Initial wire: 8.1
 Final wire: 8.2
 Wires available from: 8.3



support@pneutech.com
 888.966.9007 • Pneutech.com

RKHD-75 Fixed Speed - Electrical Schematics

Terminal



RKHD-75 Fixed Speed - Electrical Schematics

Layout

